

## CS Patchcord

### Description:

#### PRELIMINARY DATASHEET

The CS<sup>®</sup> connector was introduced as a replacement to current duplex LC connectors which are too big for newer generation transceiver interfaces and to increase the connector density in patch panels. The CS<sup>®</sup> connector is operated with a push-pull mechanism having two cylindrical, spring-loaded 1.25 mm ferrules, within a single housing. The CS<sup>®</sup> connector's two ferrules are pitched at 3.8 mm apart, which is the minimum possible spacing to meet today's TOSA and ROSA optics requirement. The CS<sup>®</sup> connector can be used with 2 mm jacketed cable.

CS<sup>®</sup> Connector Designed for next generation 200/400G transceiver QSFP-DD and OSFP



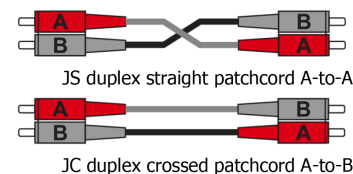
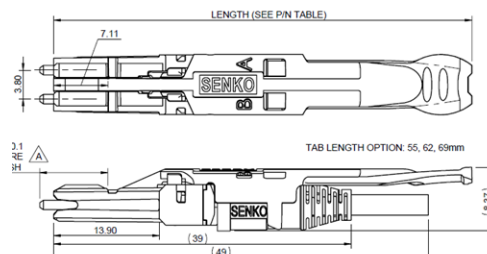
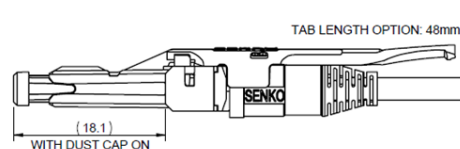
### Features:

- 40% size reduction compared to LC Duplex
- Connector adopted by QSFP-DD, OSFP and COBO
- Performance exceeds LC
- Push/Pull tab for a better usability in high density applications
- for a better usability in high density applications
- Double the density in patch panel compared to LC
- IEC random mating Grade B

### Specifications:

	MM PC	SM Ultra PC	SM Angle PC
Insertion loss (IL)		Grade B	Grade B
(IEC 61300-3-4)	0.25 dB typ	0.12 dB typ	0.15 dB typ
	0.50 dB 97%	0.25 dB 97%	0.25 dB 97%
Return loss (RL1)			
(IEC 61300-3-6)	>35 dB	>50 dB	>65 dB
Housing color	Aqua	Blue	Green
Boot color	White	White	White
Tab color	White		
Assembly procedure	glue and polish		
Connection	physical contact		
Lock mechanism	push-pull tab		
Standards	IEC/EN		

Ferrule material	full ceramic zirconia 1.25 mm
Connector material	thermoplastic
Adapter material	polymer composite, zirconia sleeve



## Adaptors:

### Single channel (2F)



### Dual channel (4F)



### Triple channel (6F)



### Quad channel (8F)



### Recommended panel cut-out, panel thickness 1.7 mm max

A-CS2/PC-01-05-BL w/o flange

A-CS4/PC-01-05-BL w/o flange

A-CS6/PC-01-05-BL w/o flange

A-CS8/PC-01-05-BL w/o flange

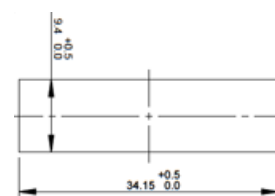
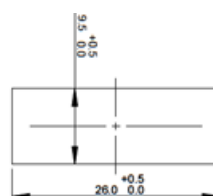
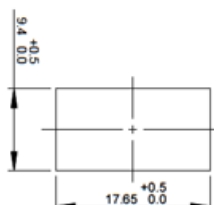
A-CS2/PC-01-01-BL with flange

A-CS4/PC-01-01-BL with flange

A-CS6/PC-01-01-BL with flange

A-CS8/PC-01-01-BL with flange

Note: 1) adaptor aqua color: ...-AQ



## Patchcord samples:



UCS48-R2 S7A-JC-003



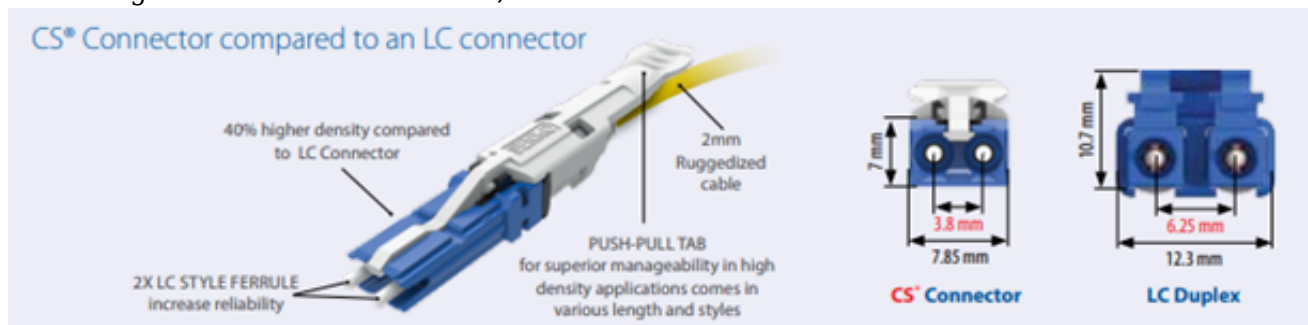
UCS48-ULCDF-R2 S7A-JC-003



Duplex LC Uniboot with Flip

## Application:

- Next generation Telecom & LAN, WAN



## Ordering code:

Ordering code:

AAAXX		- XX XXX	- XX	- XXX
AAA - Connector				XXX - length [m]
Type	Description			
CS	Duplex CS/PC multimode			
UCS	Duplex CS/UPC, Grade B			
NCS2	Duplex CS/APC, Grade B			
ULCDF	Duplex LC Uniboot with Flip			
XX	Push-pull tab length			
36	36 mm (09 fiber type)			
55	55 mm (R2, R3 cable type)			
On request:	48, 62, 69 mm			
		X - type (pigtail or jumper)		
		JC	jumper A-B crossed	
		JS	jumper A-A straight	
		PT	pigtail tight buffered, strip in one shot < 10 cm	
		PS	semitight 20-30 cm in one shot	
		PD	pigtail easy strip > 100 cm	
		XX - diameter of fiber, cable		
		fiber		
		09	fiber Ø 0.9 mm	
		duplex cable		
		R2	Ø 2 mm round cable	
		XXX - type of fiber		
		OM1	MM 62.5/125 µm	
		OM2-5	MM 50/125 µm	
		S2D	SM 9/125 µm (G.652D)	
		S7X	SM 9/125 µm (G.657X)	